

A994.4.1

Louis F. Richardson  
Whitby

# OSHAWA

## KEY PLAN

SCALE, 500 = 1 INCH

OSHAWA, ONT.  
 Surveyed APRIL 1904  
 REVISED TO MARCH, 1911  
 POPULATION 7000  
 Water Works - Direct pressure, 1 high pressure pump, cap. 1200 gals. per min.; 1 fire pump (Show Duplex McDougall) cap. 800 gals. per minute. Pumping station on Lake Shore about 4 miles from town. Pressure in houses past of town 20 lbs. Domestic 60 lbs. Fire Department Paid brigade of chief and 14 men, 1 fire engine, Hook and Ladder Truck, Hose wagon, hose truck at headquarters, hose reel at mill-station. (See Sheet 21) - 2200 ft. of hose, 25 hydrants to fire alarm boxes.  
 Change of occupation, minor alterations and small sheds are not indicated unless covered by construction.  
 CHAS. E. GOAD, CIVIL ENGINEER,  
 Toronto, Montreal, Winnipeg & London, Eng.

CHAS. E. GOAD,  
 CIVIL ENGINEER,  
 TORONTO, MONTREAL & WINNIPEG,  
 CANADA.

COPYRIGHT IN CANADA 1904, BY CHAS. E. GOAD.  
 REVISED & EXTENDED MARCH, 1911

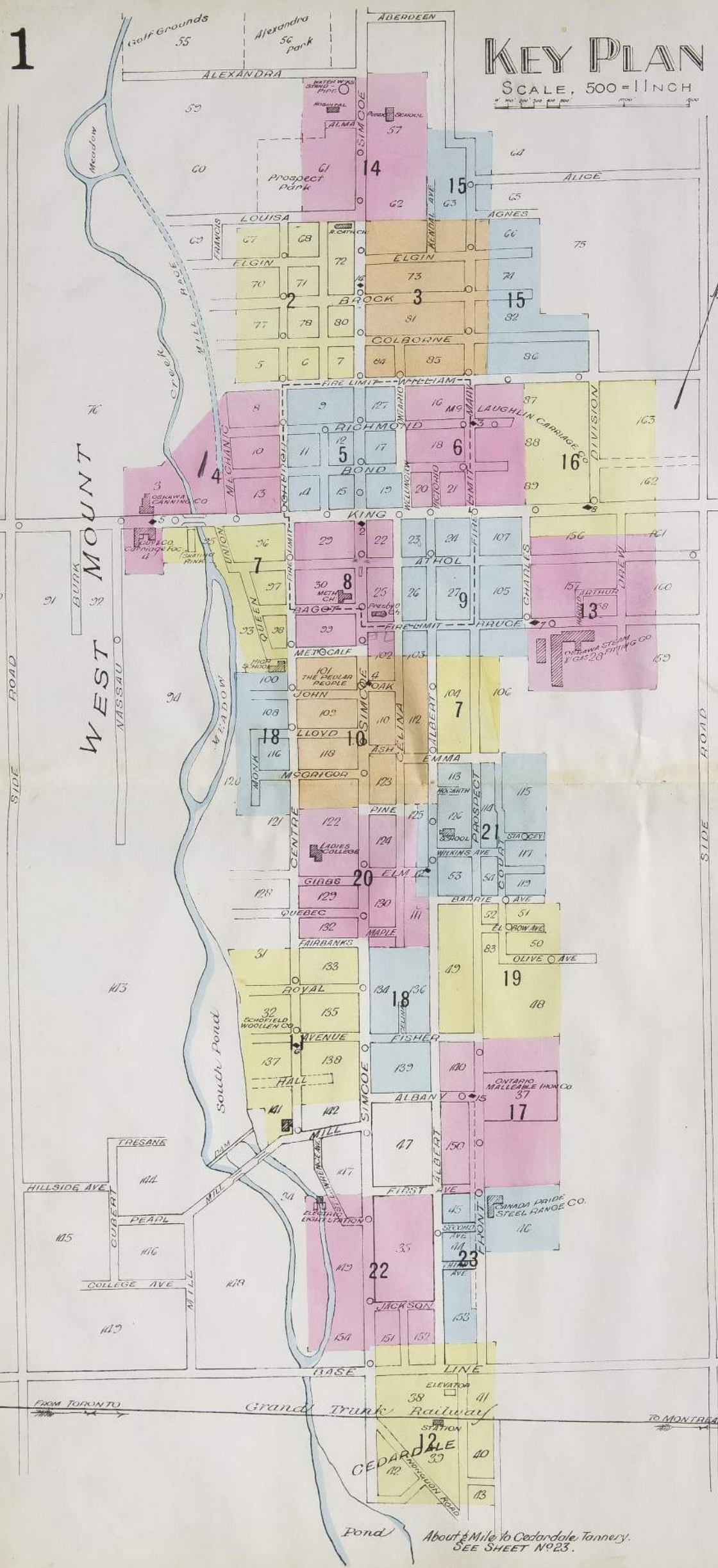
Sheets 1, 2, 3, 4, 6, 7, 8, 9, 10 & 12 Revised & 10 New Sheets added Nov 11/10

KEY

- RED - BRICK
- YELLOW - WOOD
- GREEN - SHEDS
- SLATE COLOR - ENTIRELY IRON CONSTRUCTION
- ON 200 SCALE, VENEERED BUILDINGS ARE COLORED RED & MARKED V
- R.C. - ROOF CAST IN PLACE
- PROBABLE FIRE CUT OFF
- FIRE WALL 6" TO 18" ABOVE ROOF
- FIRE WALL 18" TO 30" ABOVE ROOF
- OPENINGS IN WALLS (2nd FLOOR)
- IRON OR STANDARD DOORS & SHUTTERS
- STEAM BOILERS
- LIFTS OR ELEVATORS
- WOOD & LATH & PLASTER PARTITION
- PASSAGE OF DRIVEWAY UNDER
- 3" x 12" STUDY (BRICKS ONLY) STAIRS
- 6" x 6" JOIST, BOTH SPANS BEARING FROM LEFT TO RIGHT
- 2" x 6" x 4" FACING BUILDING
- PARAPET WALL (DOUBLE LINE)
- STABLE (DIAGONAL LINE)
- GALLERY OR VERANDAH
- METAL CORNICHE (SOLID LINE)
- WOODEN CORNICHE (DOTTED LINE)
- SKYLIGHT LINES UNLESS OPENING IN FLOOR
- LUMBER PILED
- FIGURES IN BRACKETS (1/2) INDICATE RELATIVE HEIGHTS OF BUILDING
- FIGURES IN STRAIGHT LINES 66" STREET WIDTHS
- INTERVALS TO BE OUTSIDE OF STREET LINE AND EACH TWO STREET FEET, MEAS. FROM ANGLES TO ON INSIDE STREET LINE, ARE ARBITRARY
- 2" x 6" x 4" CHIMNEY 100 HIGH 24" x 24" x 24" x 24" x 24"
- DOWN HYDRANT OR PRIVATE HYDRANT
- ON KEY PLAN
- HYDRANTS & METALS INDICATED BY DWELLINGS
- & SCATTERED DWELLINGS

BLOCK NOS	SHEETS
1	4
2	NOT USED
3-4	4
5-7	4
8	4
9	4
10	4
11-12	4
13	4
14-15	5
16	5
17	5
18	5
19	5
20-21	5
22	5
23-24	5
25	5
26-27	5
28	5
29-30	5
31-32	5
33	5
34	5
35	5
36	5
37-38	5
39-40	5
41-46	5
47	Key
48-52	5
53-54	5
55-56	5
57-58	5
59-60	5
61	Key
62	5
63	5
64-65	5
66	5
67-68	5
69	Key
70-72	5
73	5
74-76	5
77-78	5
79	Key
80	5
81	5
82	5
83	5
84-85	5
86	5
87-89	5
90-92	5
93	Key
94-98	5
99	5
100	5
101	5
102	5
103	5
104	5
105	5
106	5
107	5
108	5
109-110	5
111	5
112	5
113-115	5
116	5
117	5
118	5
119	5
120-121	5
122	5
123	5
124	5
125	5
126	5
127	5
128	5
129-130	5
131	5
132	5
133	5
134	5
135	5
136	5
137-138	5
139	5
140	5
141	5
142-146	5
147	5
148	5
149	5
150	5
151-152	5
153	5
154	5
155	5
156	5
157-160	5
161	5
162-163	5

INDEX TO SPECIALS	SHEETS
<b>CHURCHES &amp; Baptist</b>	2
Christian Workers	7
Episcopal	10
Methodist (Metcalf St)	8
(Simcoe)	8
Presbyterian	8
Roman Catholic	2
Salvation Army	10
Y.M.C.A.	8
<b>FACTORIES, FIRMS &amp; C.</b>	
Canada Pride Steel Range Col. Ltd.	23
Cedardale Tannery	23
Coryell L.J. (Elevator)	12
Dixon A.W. (Flour Mill)	4
Eaton Co. Ltd. The T. (Whitewear fac.)	13
Electric Light Station	22
Electric Railway Power Station	11
Guy & Son H. Planing Mill	9
Guy & Co. M. Carriages & Co.	4
Hall Machine Wks. The Joseph	2
Hare W.J. (Foundry)	4
Henry J.D. (Cold Storage)	12
McLaughlin Carriage Co. Ltd.	616
Oshawa Canning Co.	4
Oshawa Gas Works	7
Oshawa Grain & Produce Co.	4
Oshawa Interior Fittings Co.	2
Ontario Malleable Iron Co. Ltd.	17
Oshawa Steam Laundry Co.	5
Pedlar People Metal Roofing Co.	10
Schofield Woollen Co.	11
Sykes A.J. Sash & Door Fac.	5
Williams & Sons Co. The HS. (Panofac)	7
Woon & Co. R. (Joseph Hall Machine Wks.)	2
<b>HOTELS :-</b>	
American House	8
Brook	12
Central	8
Commercial	8
Oshawa	4
Queens	5
<b>SCHOOLS &amp; C :-</b>	
High School	7
Ladies College	20
Roman Catholic	2
Public School (Albert St)	21
(Mary St)	3
(Metcalf St)	10
(Simcoe St)	41
<b>WAREHOUSES, PUBLIC BLDGS &amp; C :-</b>	
Freight Sheds (G.T.R.)	12
(Electric Ry)	8 & 9
G.T. Ry Station	12
Hospital	14
Music Hall	5
Public Library	8
Skating Rink	5 & 7
Town Hall	5
Warehouses (Fruit)	12
(Storage)	12



A 974.4.1

2

SEE SHEET No 14

2

R. CATH. CHURCH  
Stone built  
18' to eaves  
502'

OSHAWA, ONT.  
APRIL 1904

H. CATH. SCHOOL  
510'

Presbytery

67

68

72

70

71

BROCK

PRINCE

SIMCOE  
SEE SHEET No 3

78

80

77

COLBORNE

SCALE 50 FT. = 1 INCH

5

6

7

Lumber piled  
10' High  
STEAM POWER & HEAT  
LIGHT-OIL, FUEL-COAL

THE JOSEPH HALL MACHINE WORKS  
R. WOOD & CO.  
Store Rm. Machine Shop  
Wood Work & Prolonging  
Storage

WILLIAM

SEE SHEET No 5

SEE SHEET No 4

A 794.4-1

2

SEE SHEET No 14

2



OSHAWA, ONT. - APRIL 1904

67

68

Presbytery

ELGIN

72

70

71

BROCK

PRINCE

SIMCOE

SEE SHEET No 3



77

78

80

COLBORNE

SCALE 50 FT. = 1 INCH

5

6

7



WILLIAM

SEE SHEET No 5

SEE SHEET No 4

A 974.4-1

3

SEE SHEET No. 14

SEE SHEET No. 15

3

62

KENDAL AVE.

63  
(O.B. 62.)

66

ELGIN

73

74

SEE SHEET No. 15

SEE SHEET No. 2

SIMCOE

BROCK

MARY

81

82

SCHOOL

COLBORNE

84

ONTARIO

85

86

WILLIAM

SEE SHEET No. 6

SCALE 50 FT. = 1 INCH

Private Map of Township Carleton Place



SEE SHEET No. 2



CONTINUED FROM BELOW

SEE SHEET No 5

CONTINUED ABOVE

SEE SHEET No. 7

SCALE 50 FT. = 1 INCH

1-7-11-11-11-11

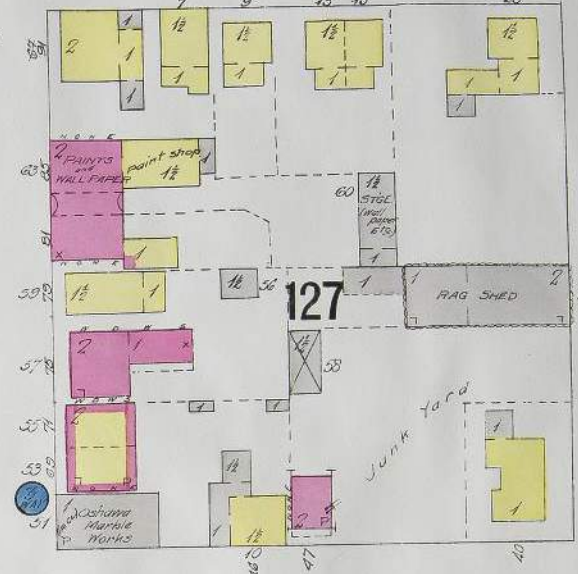
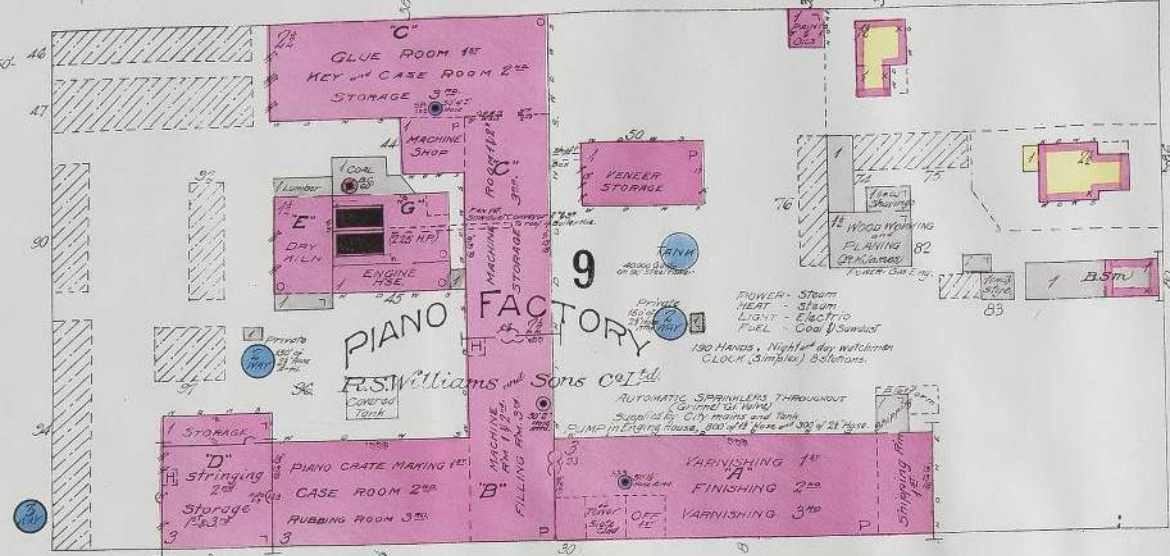
SEE SHEET No. 2

SEE SHEET No. 3

WILLIAM

DUKE

RICHMOND



SEE SHEET No. 4

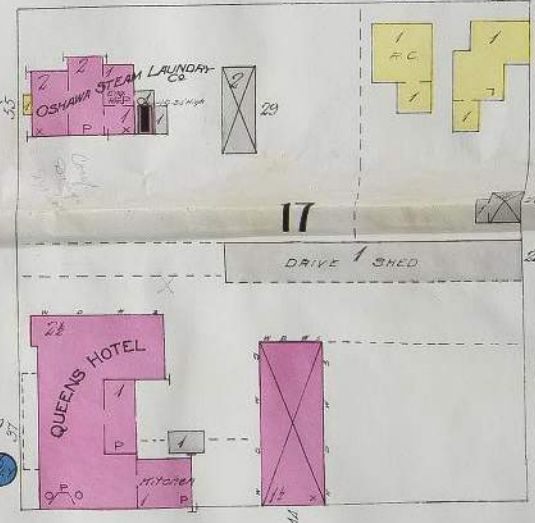
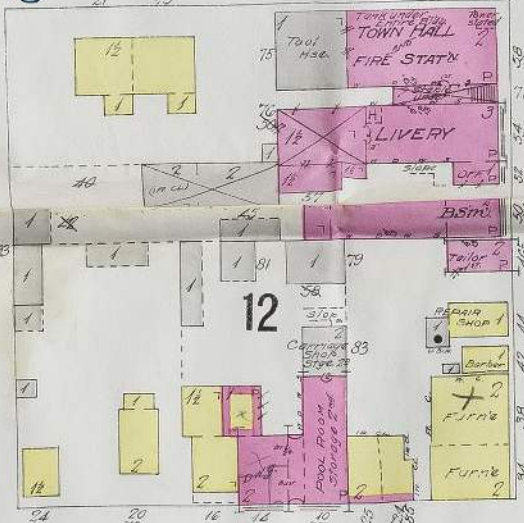
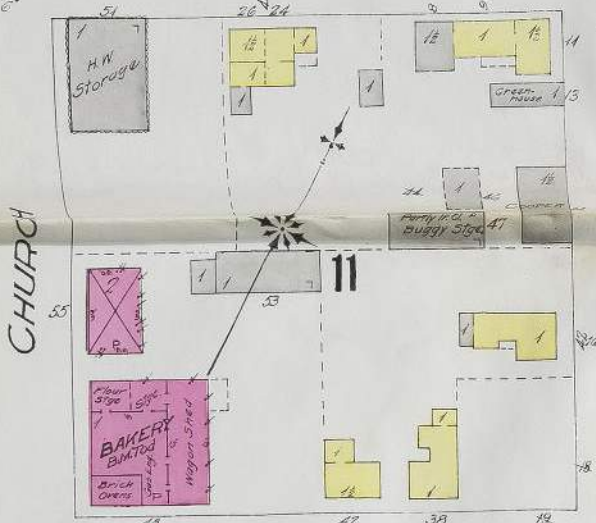
CHURCH

PRINCE

SIMCO

ONTARIO

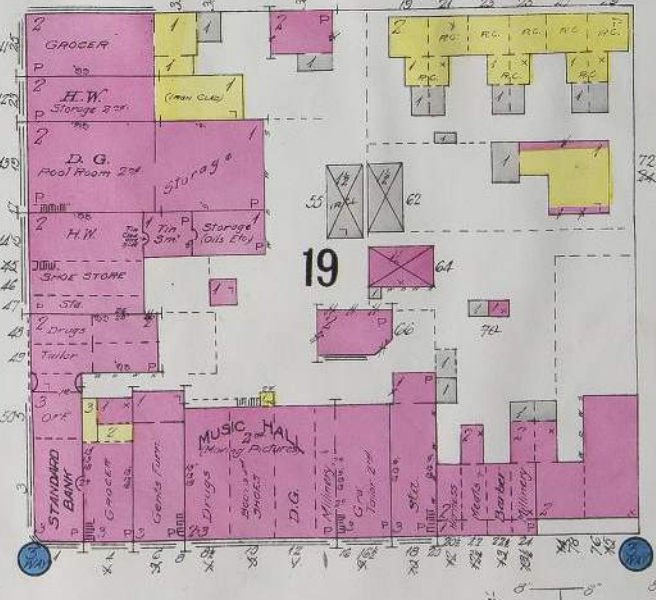
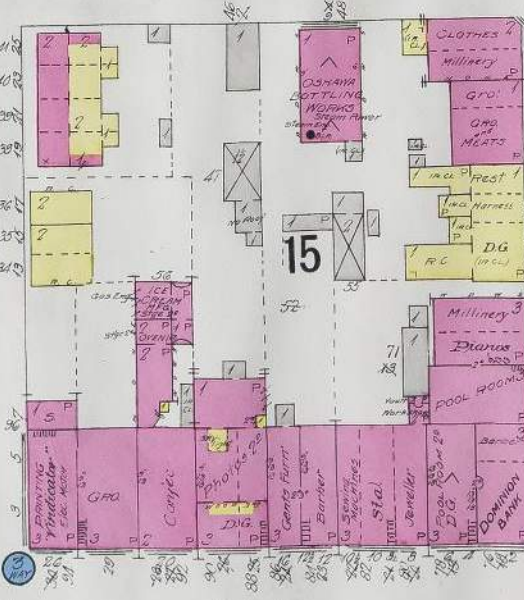
SEE SHEET No. 6



BOND

KING

WELLINGTON



CENTRE

SCALE 50 FT. = 1 INCH

SEE SHEET No. 8

CELINA

4994-4-1

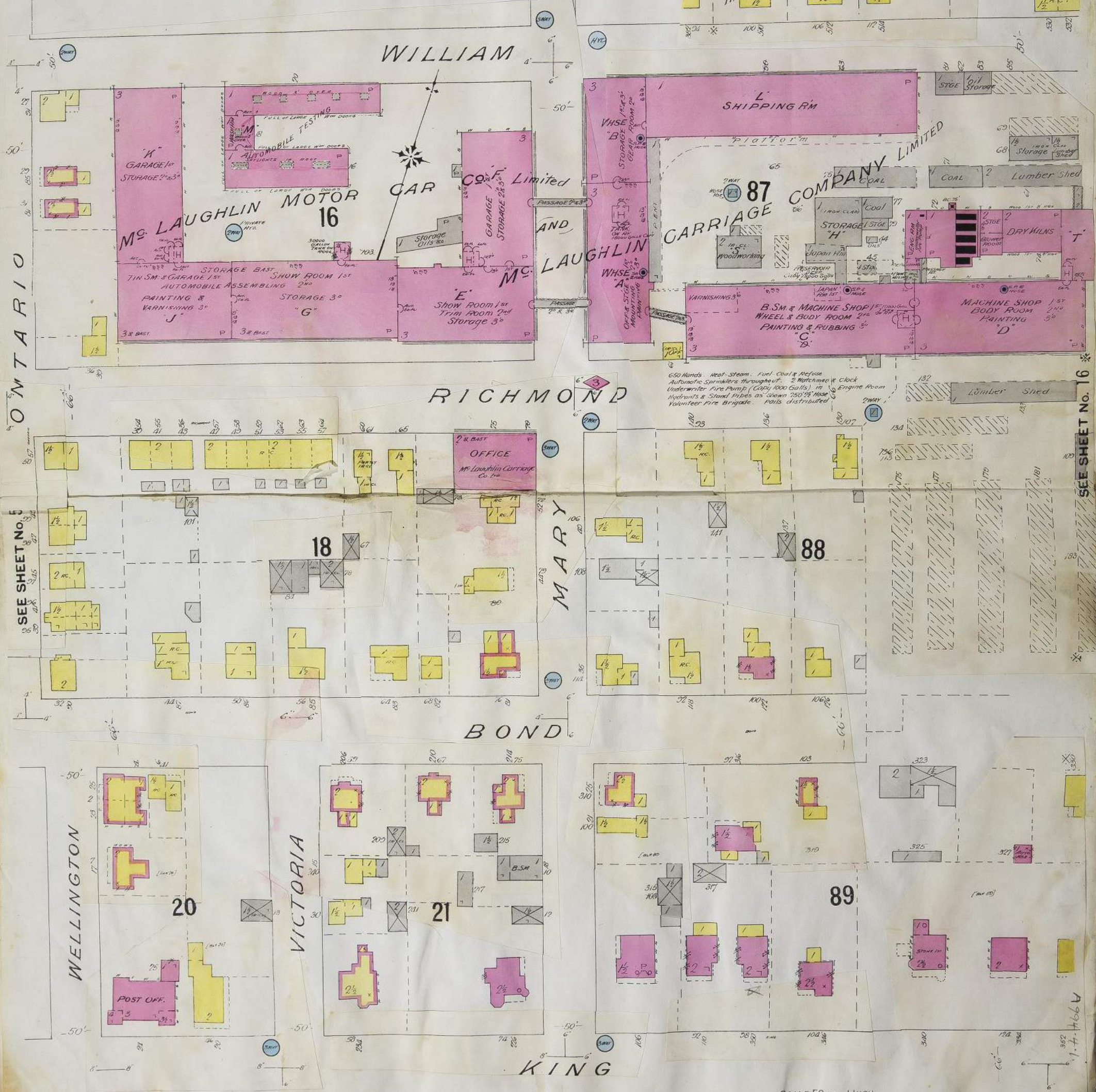


ONTARIO

SEE SHEET No. 5

SEE SHEET No. 3

THESE BUILDINGS NOW SHOWN ON NEW SHEET No. 15



650 Halls - Heat, Steam, Fuel, Cool & Refuse  
 Automatic Sprinklers throughout - 2 Watchmen & Clock  
 Underwriter Fire Pump (Capacity 1000 Gallons) in  
 Hydrants & Stand Pipes as shown 750' Hose  
 Volunteer Fire Brigade - Pails distributed

SEE SHEET No. 16

SEE SHEET No. 9

SCALE 50 FT. - 1 INCH

CHARLES

17-4664

SEE SHEET No. 4

SEE SHEET No. 4

CHURCH

OSHAWA DIST  
APRIL 1904

SEE SHEET No. 4

SEE SHEET No. 10

SEE SHEET No. 8

SEE SHEET No. 9

SEE SHEET No. 21

SEE SHEET No. 18

ALBERT

CURLING RINK  
Light. Gas

OSHAWA GAS WORKS  
Power - Steam  
Fuel - Coal

Coal Shed

CHURCH  
(Christian Workers)

SASH & DOOR  
FAC.

BAGOT

METCALF

HIGH SCHOOL

Creek beyond

PROSPECT

UNION

ATHOL

QUEEN

CENTRE

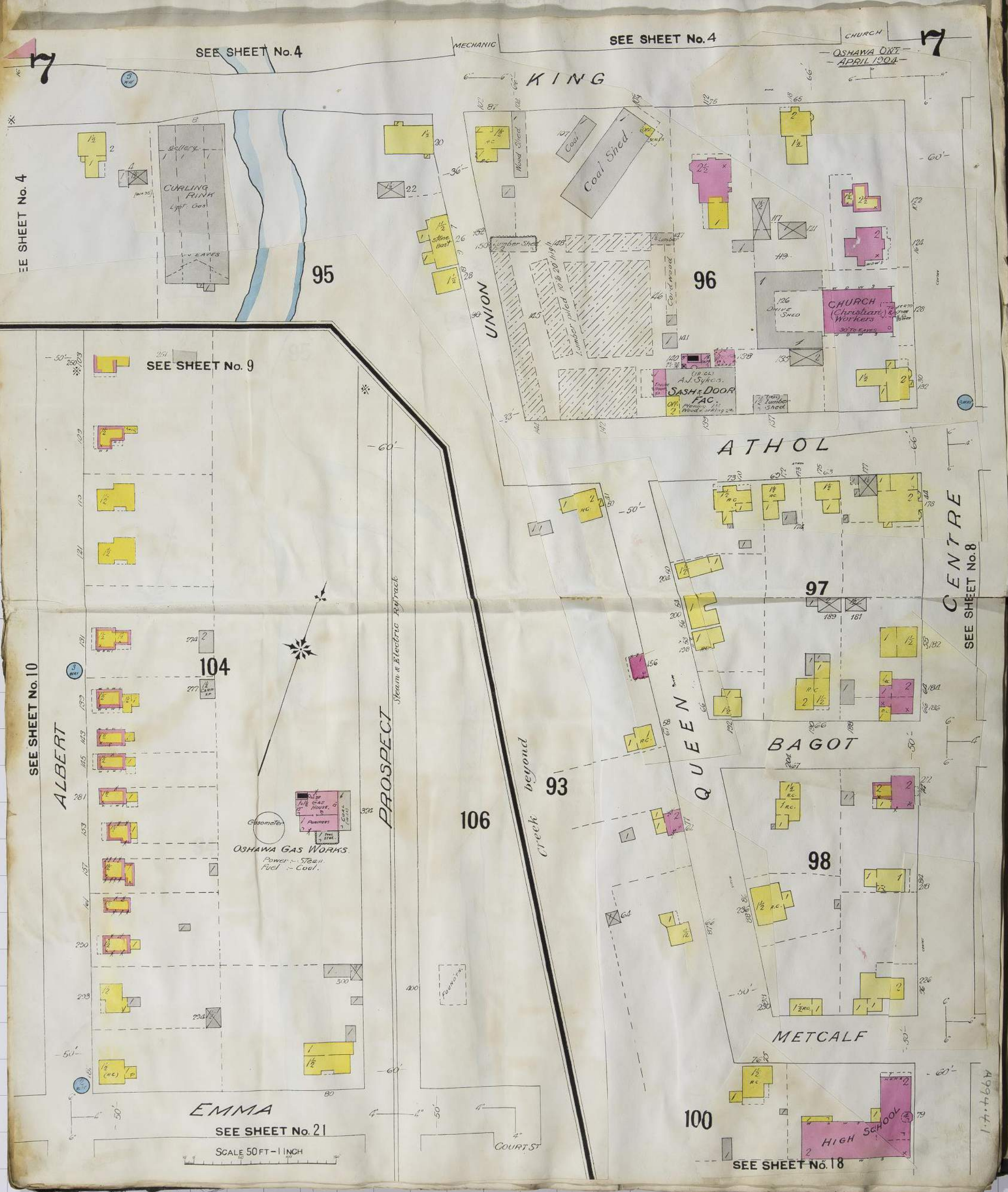
EMMA

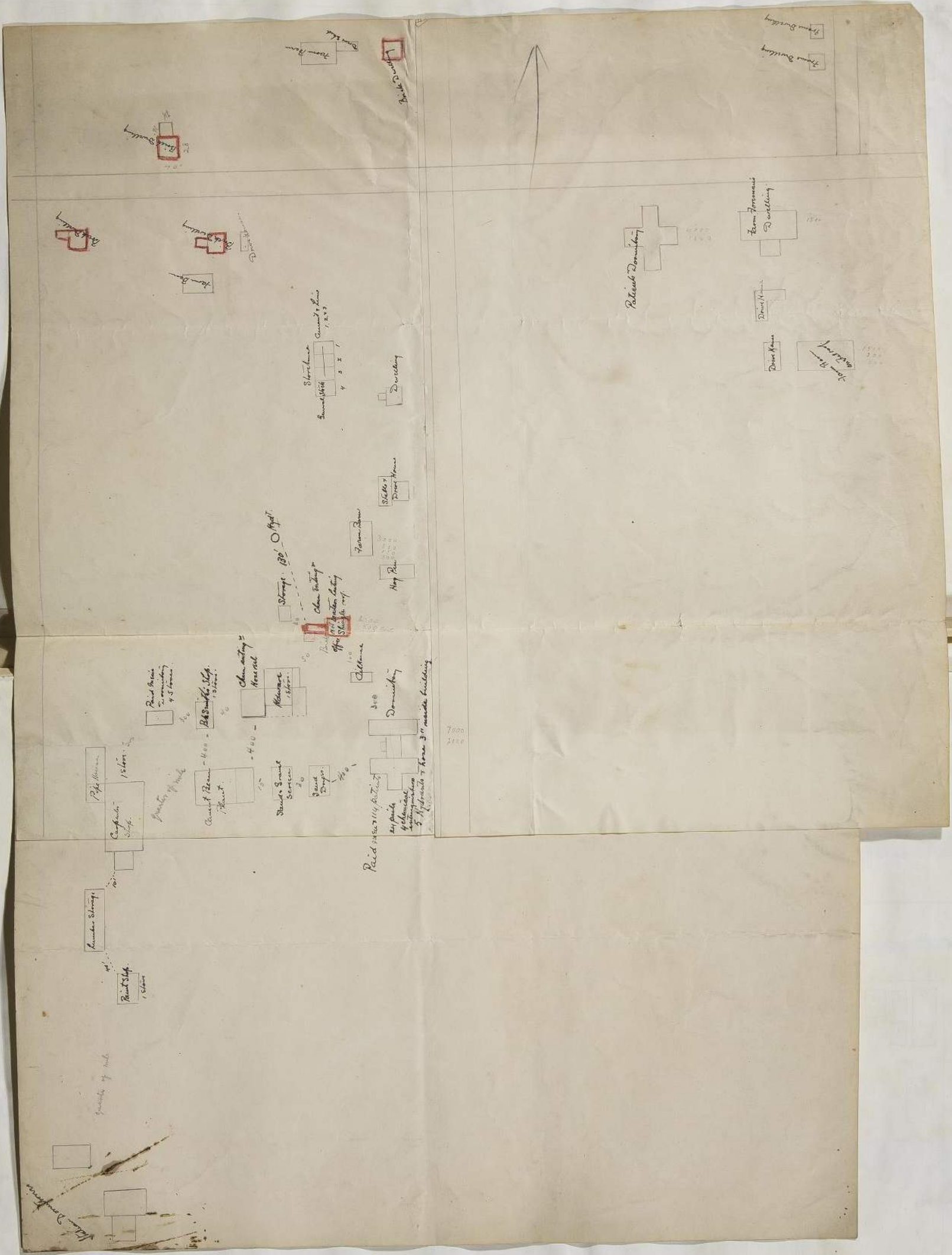
SEE SHEET No. 21

SCALE 50 FT = 1 INCH

COURT ST

A9944.4.1





SEE SHEET NO. 3

SEE SHEET NO. 3

KING

ATHOL

SIMCOE

CELINA

CENTRE

SEE SHEET No. 7

SEE SHEET No. 9

BAGOT

BRUCE

METCALF

102

A994.4.1



KING

ATHOL

PROSPECT

BRUCE

SEE SHEET No.6

CHARLES

SEE SHEET No.13

SEE SHEET No.8

CELINA

ALBERT

SEE SHEET No.10

SEE SHEET No.7

SCALE 50 FT. = 1 INCH

A 994.4-1



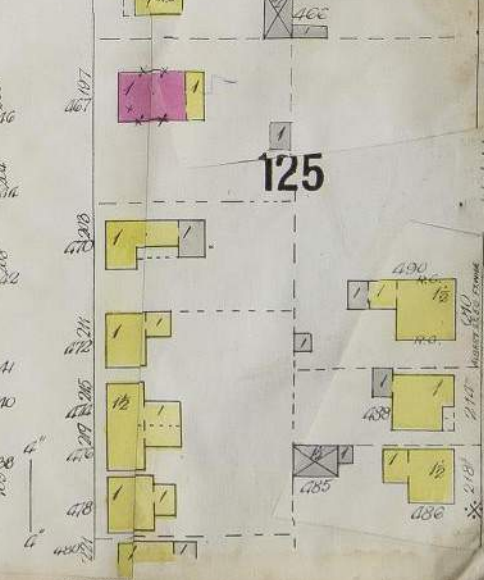
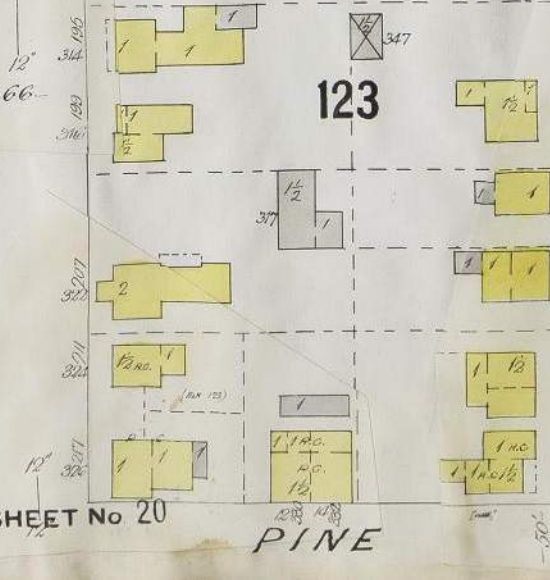
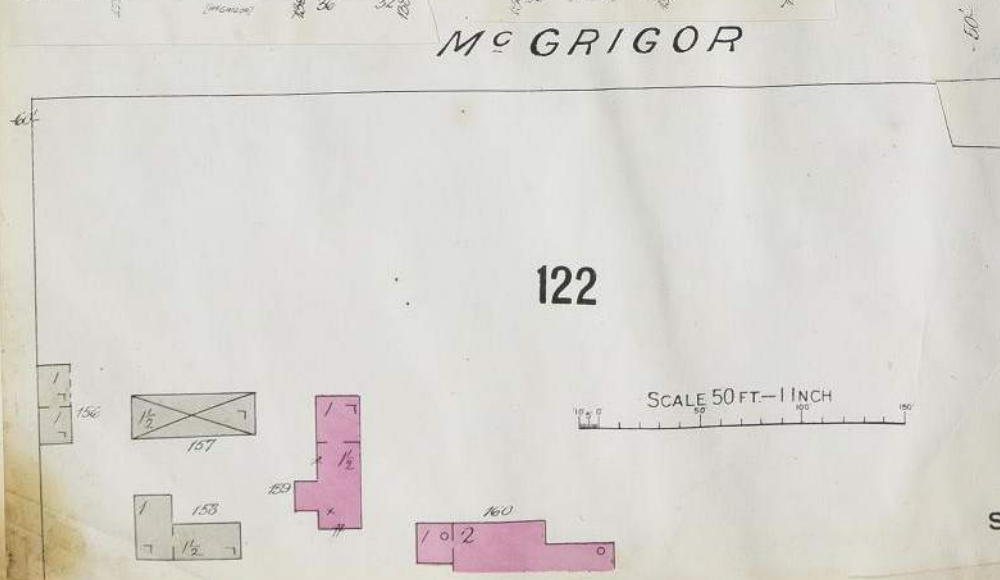
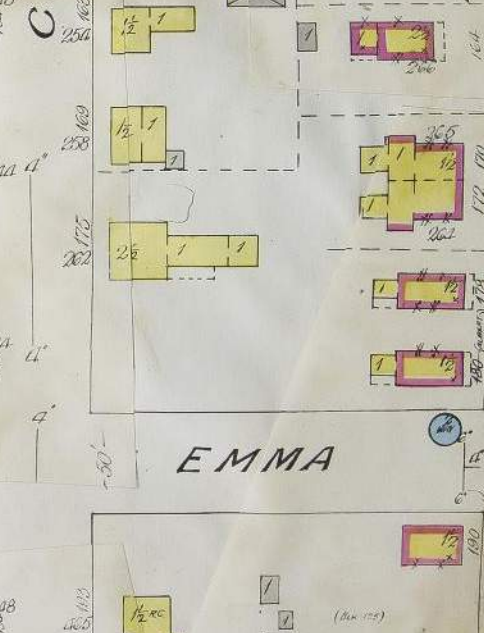
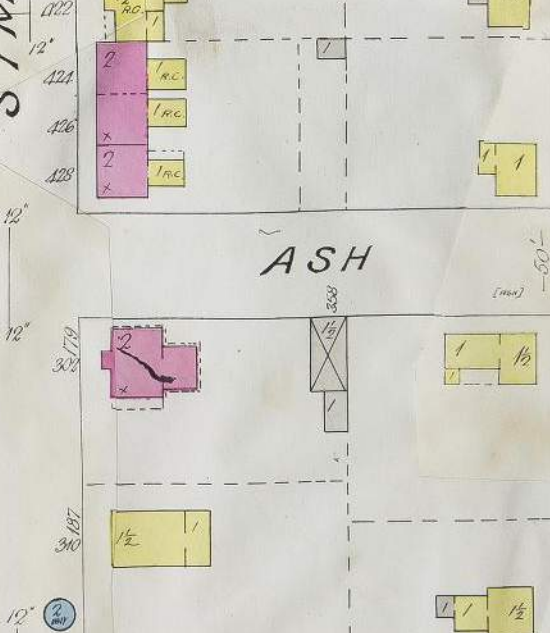
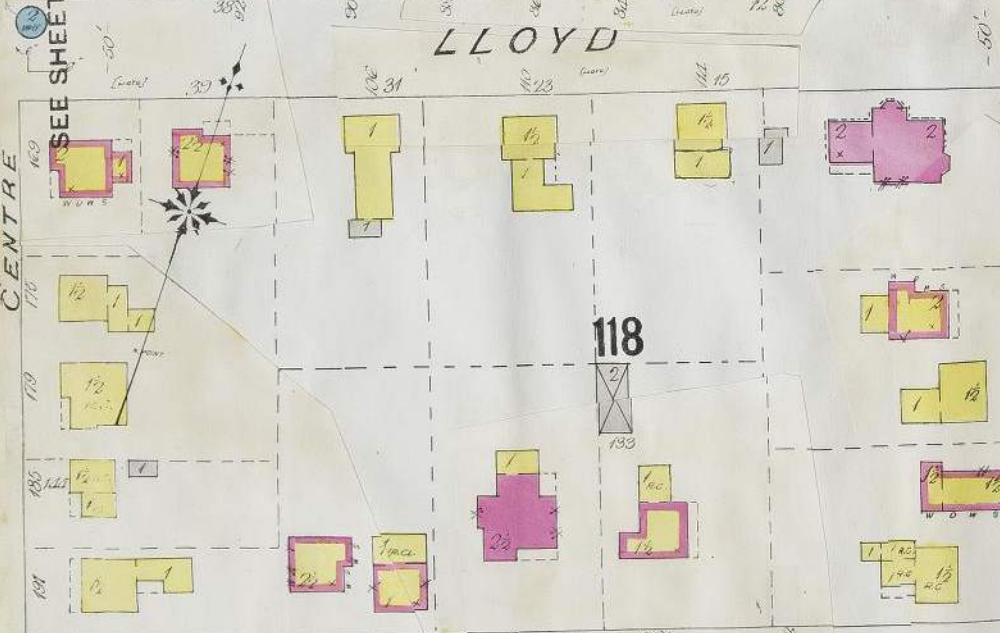
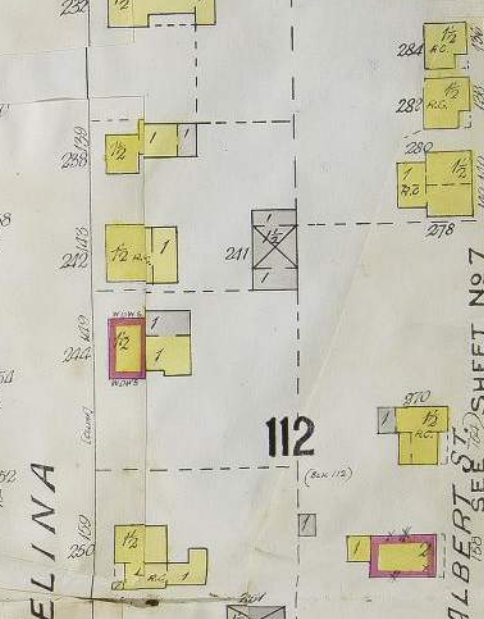
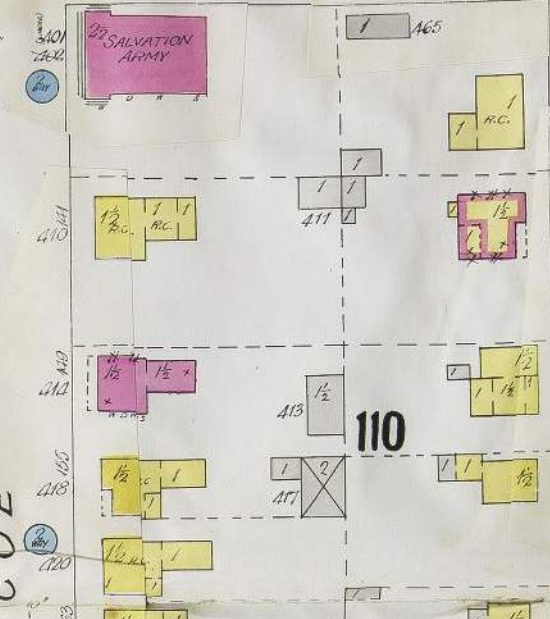
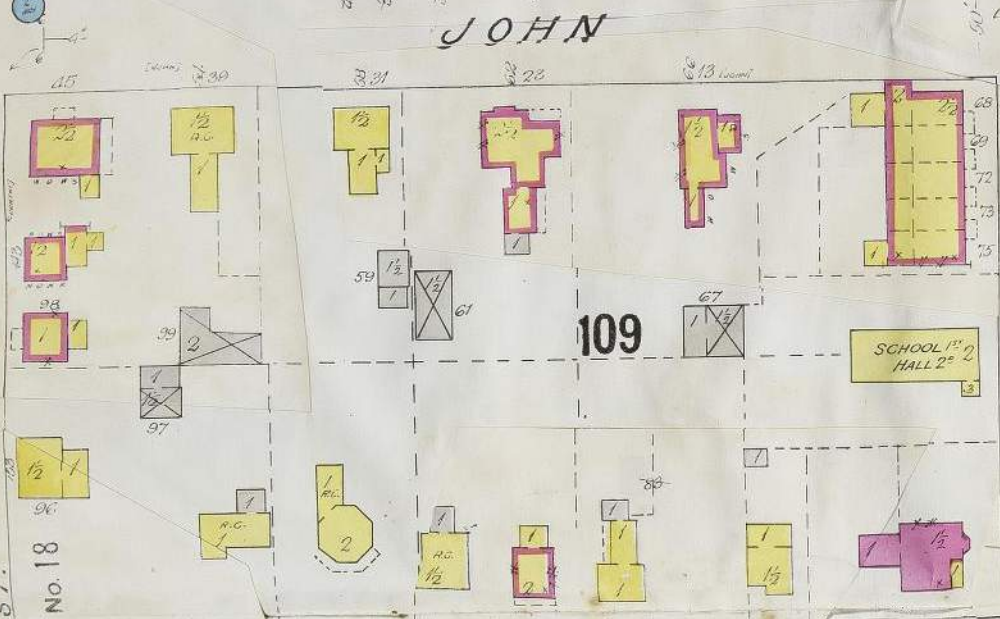
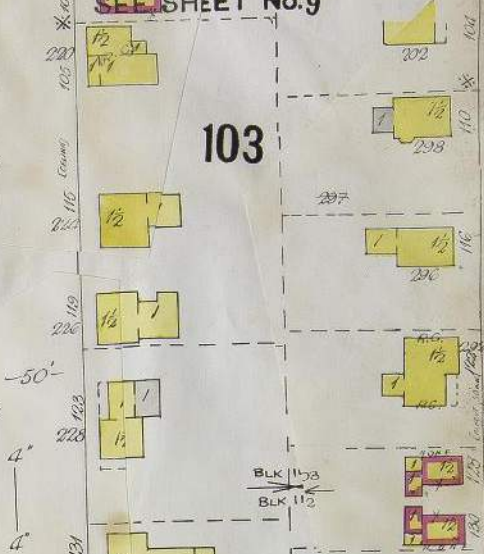
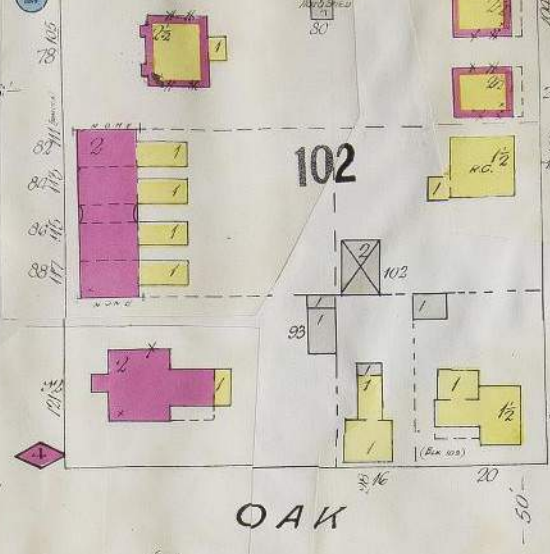
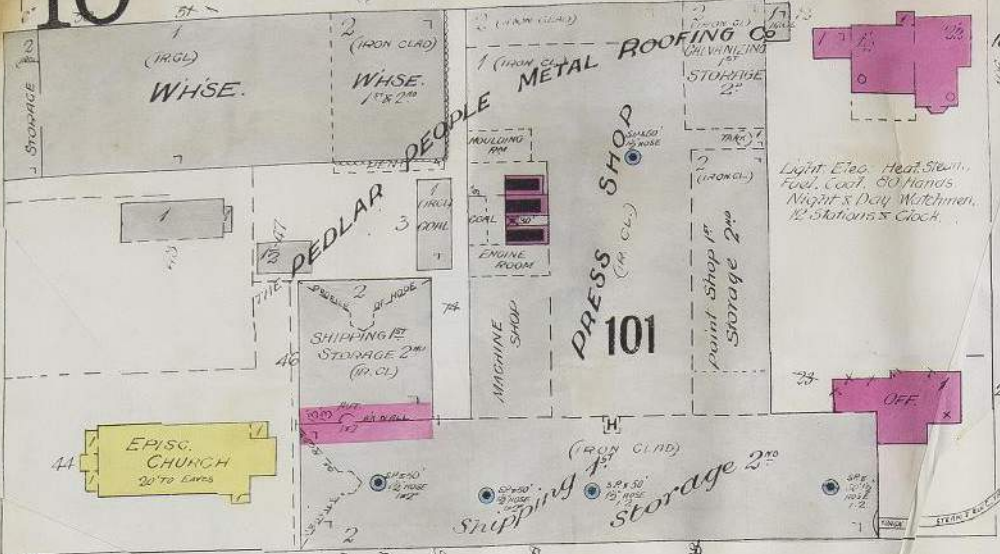
10

METCALF

SEE SHEET No. 8

10

SEE SHEET No. 9

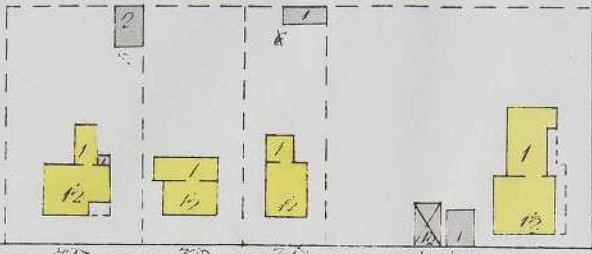


SCALE 50 FT. = 1 INCH

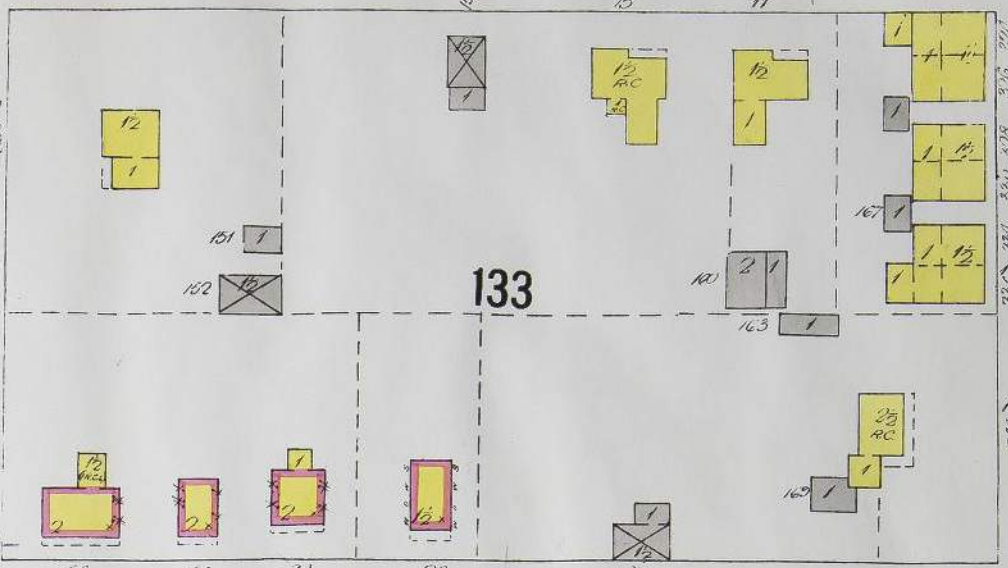
SEE SHEET No. 20

ALBERT ST. SEE SHEET No. 7

31



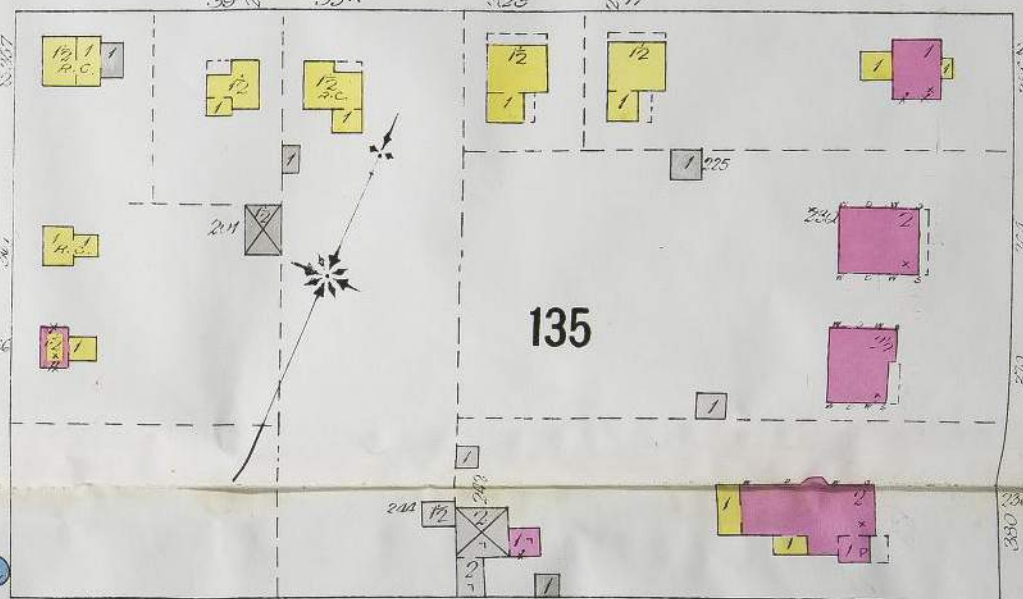
133



ROYAL

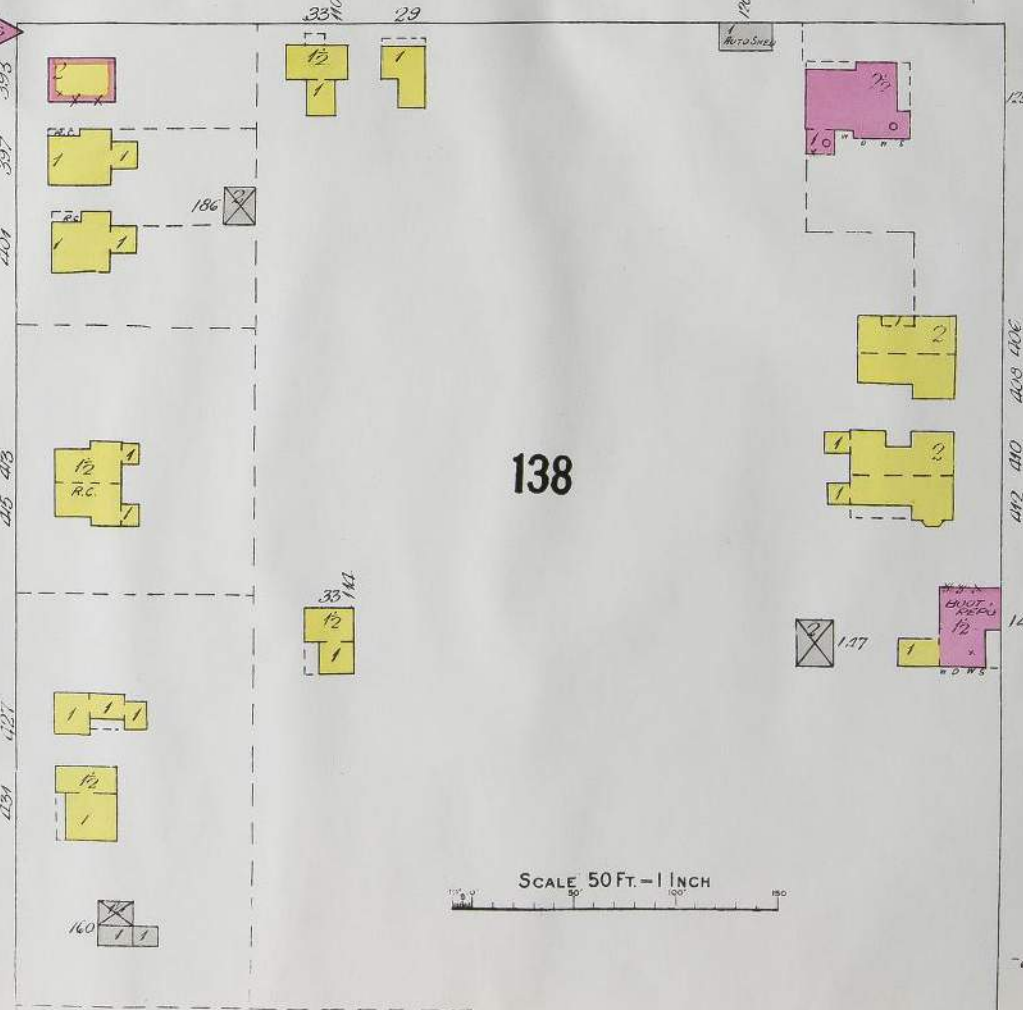
CENTRE

135



AVENUE

138



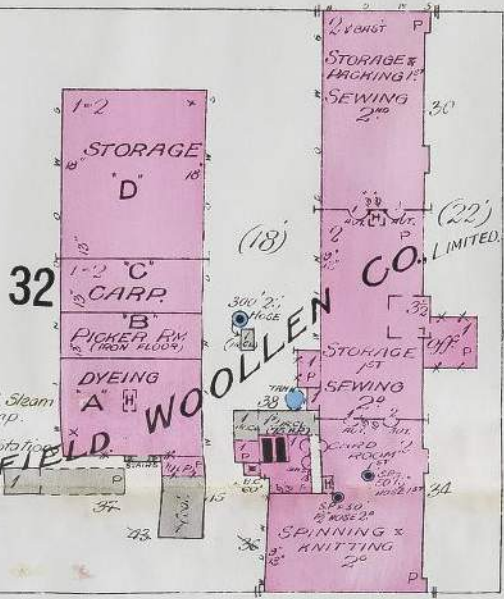
SCALE 50 FT. = 1 INCH

SIMCOE SEE SHEET No. 18



32

SCHOFIELD WOOLLEN CO. LIMITED



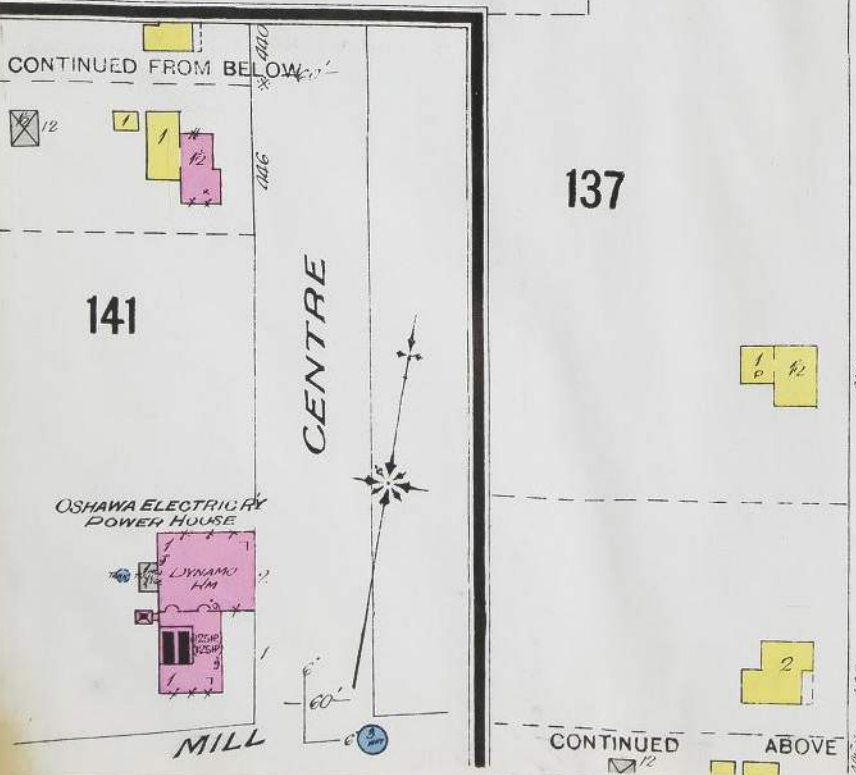
100 H.P. Motor, Power & Heat, Steam  
 Fuel, Coal, Steam Pump,  
 Electric Light,  
 Watchman & Clerk, 6 Stations,  
 Standpipes & Hose,  
 33 5/8 in.

CONTINUED FROM BELOW

141

CENTRE

OSHAWA ELECTRICITY POWER HOUSE



137

CONTINUED ABOVE

4994-4-1

151

152

153

BROOK HSE HOTEL

BRASSEY

ALBERT  
(LATER DEVO)

BASE LINE

SIMCOE



COLD STORAGE  
J. O. Henry  
2 & STONE BAST

38

See also Special Survey No. 218 (ELEVATOR & WARE PLANS)

(IRON CLAD)  
COPY 50,000 Bushels  
80 TO 100 LBS

ELEVATOR  
Ld. Coryell



41

COAL SHED

(IRON CLAD)  
FREIGHT SHED

Grand Trunk Railway

Platform  
STATION

WONQUON  
ROAD

39

STATION

NIAGARA

42

40

STREET

STREET

43

SCALE 50 FT - 1 INCH

ABOUT 1/2 MILE TO CEDARDALE TANNERY  
SEE SHEET NO. 13

A994-4-1



13

SEE SHEET No 16

156

13

OSHAWA ONT. MAR. 1911

161

ATHOL

CHARLES

WHITEWEAR FACTORY  
T.M.T. ESTER, C-114  
HEAT - Steam  
FUEL - Coal  
LIGHT - Electric

157

ARTHUR

160

SEE SHEET No. 9

HAROLD

158

DREW

BRUCE

SHIPPING ROOM

OSHAWA STEAM & GAS FITTINGS CO. LTD

28

159

MACHINE SHOP 1ST  
TAPPING SHOP 1ST  
STORES 2ND  
INSPECTION ROOM 2ND

Stores 1st  
PATTERN STGE 2ND

FOUNDRY  
MILL HOUSE

ENGINE DYNAMO ROOM  
250 H.P.  
HEAT - Steam  
FUEL - Coal  
LIGHT - Electric  
(Generated on Premises)  
Night & Day Watchmen  
CLOCK 10 Stations  
1000 feet of 2 Phase  
Pipes distributed

FLASH STGE  
Sand Shed

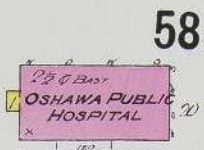
SCALE 50 FT. = 1 INCH

A994-4-1

DETACHED BK & VENE DWGS BEYOND

WATER WORKS STAND PIPE

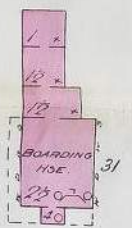
-66'



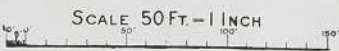
58



ALMA



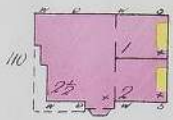
61



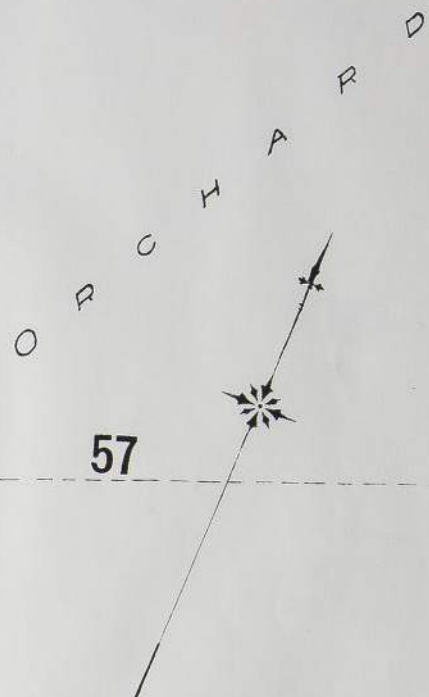
LOUISA

PRINCE

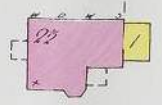
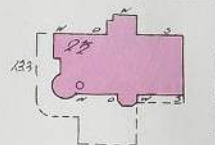
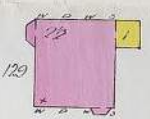
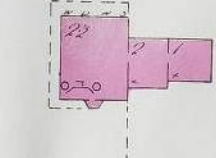
SEE SHEET No. 2



57



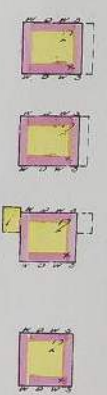
SIMCOE



62



SEE SHEET No. 3

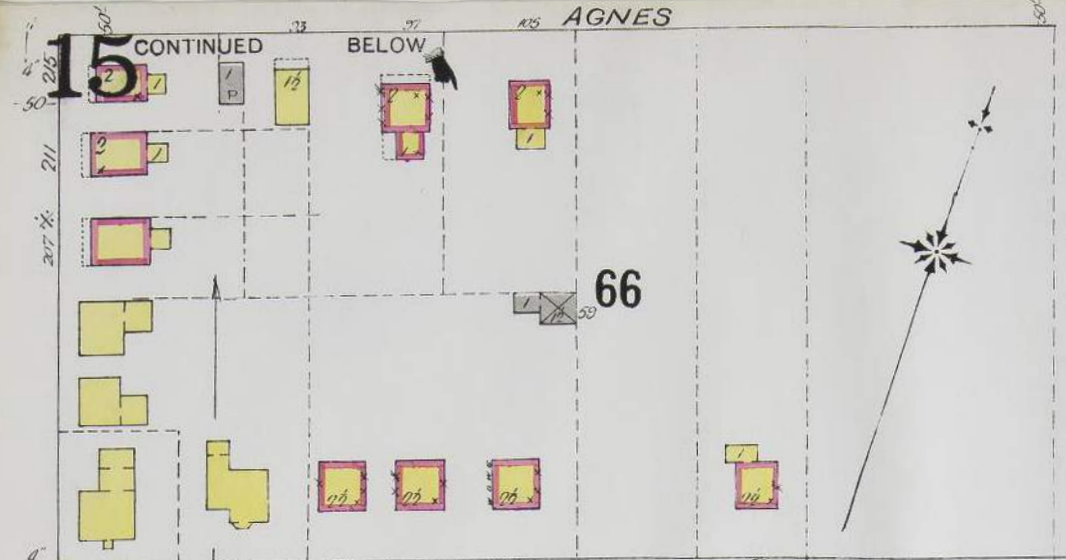


KENDAL AVE.

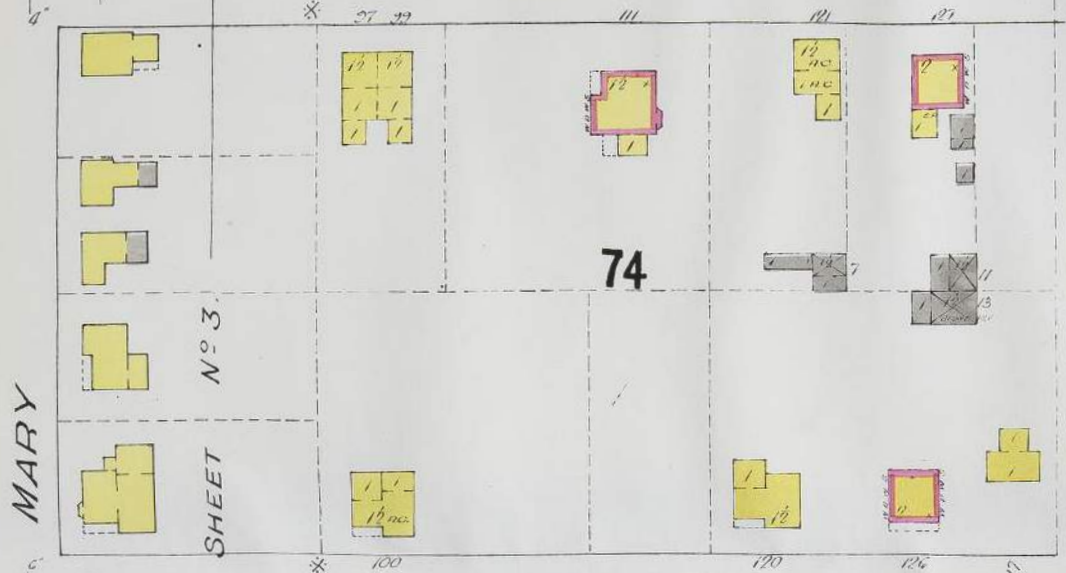
SEE SHEET No. 15

1911.4.1

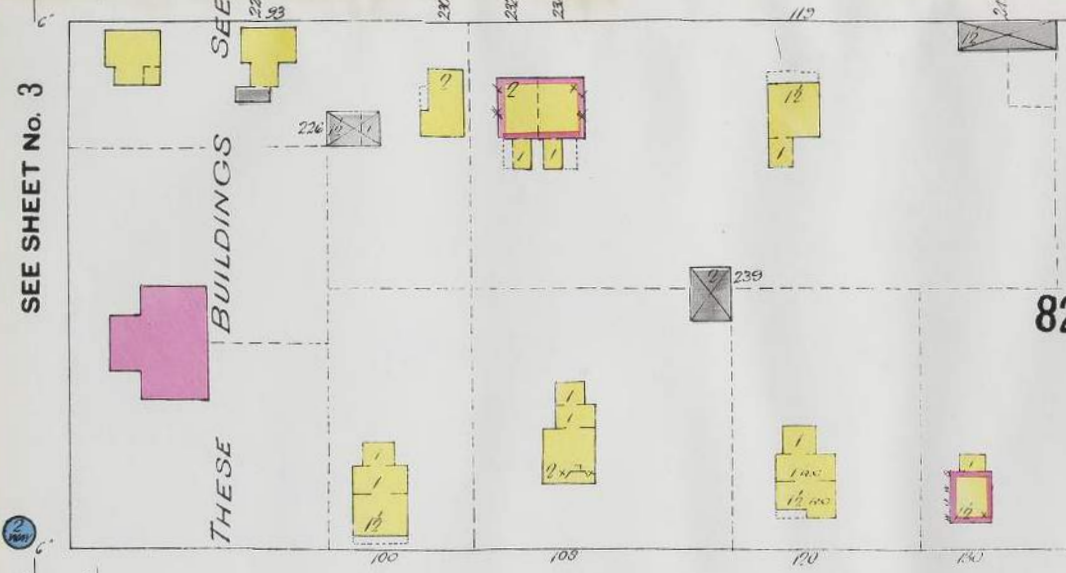
AGNES



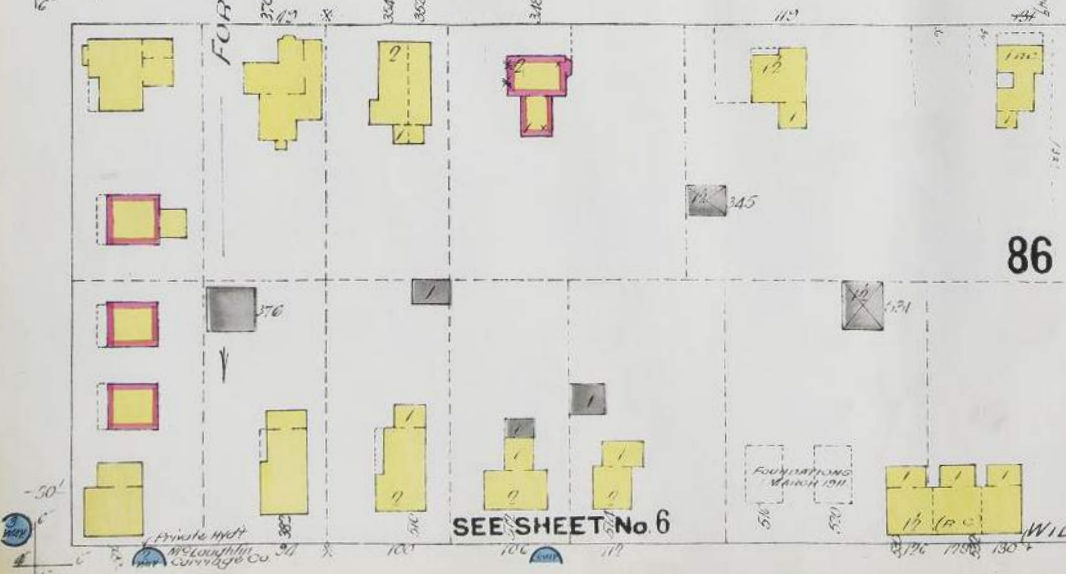
ELGIN



BROCK



COLBORNE



SEE SHEET No 14

KENDAL AVE.

SEE SHEET No 3



MARY

ALICE

AGNES

CONTINUED FROM ABOVE

SCALE 50 FT = 1 INCH

DIVISION

A9944.4.1

SEE SHEET No 6

SEE SHEET No 16

WILLIAM

MARY

SEE SHEET No 3

SEE SHEET No 3

THESE BUILDINGS

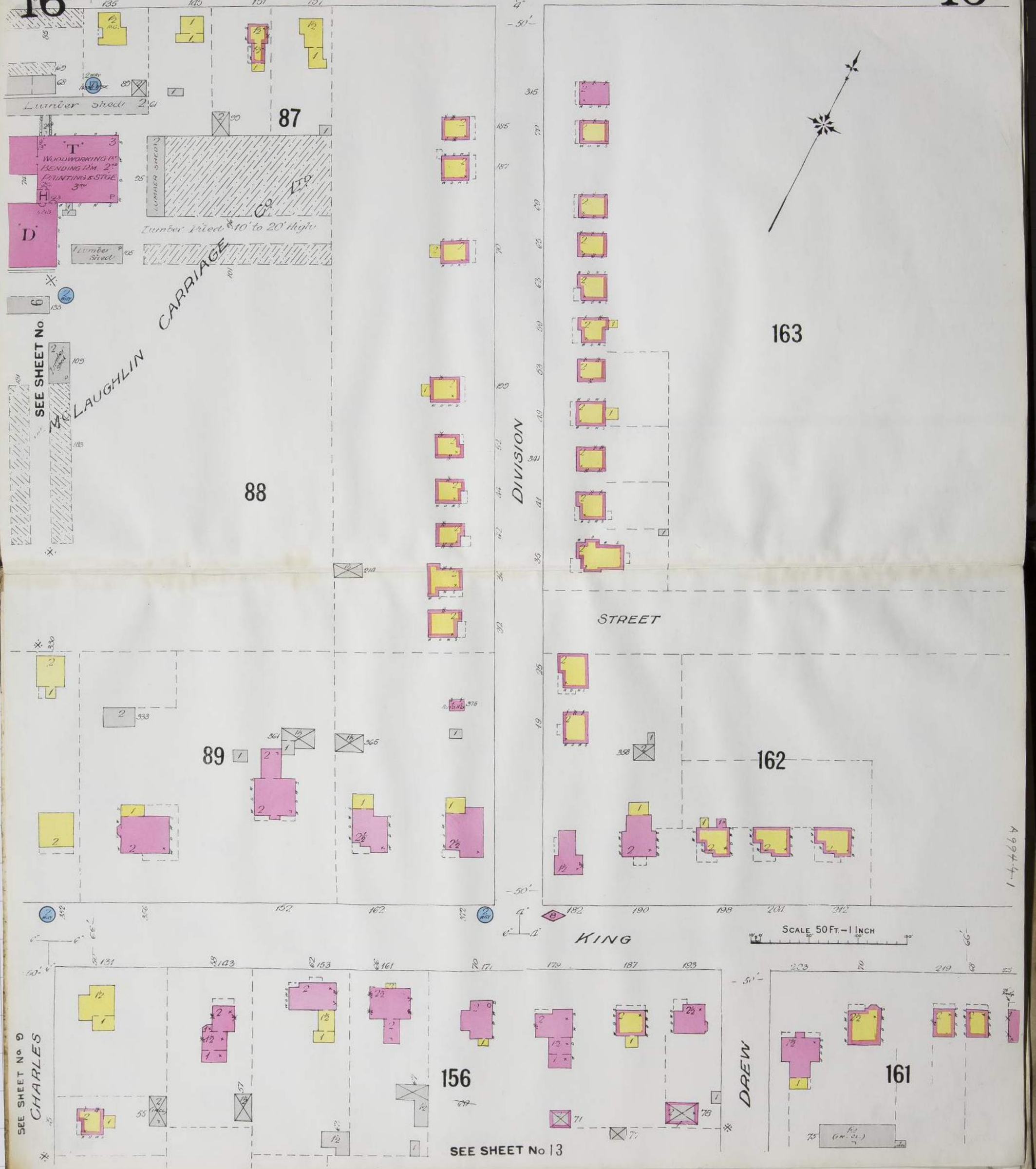
FOR

Private with McCowan carriage co

EXHIBITING MARCH 1911

SEE SHEET No 15

WILLIAM



SEE SHEET No 9  
CHARLES

SEE SHEET No 13

DREW

A 994-1

SEE SHEET No. 18

140

PROSPECT

ALBANY

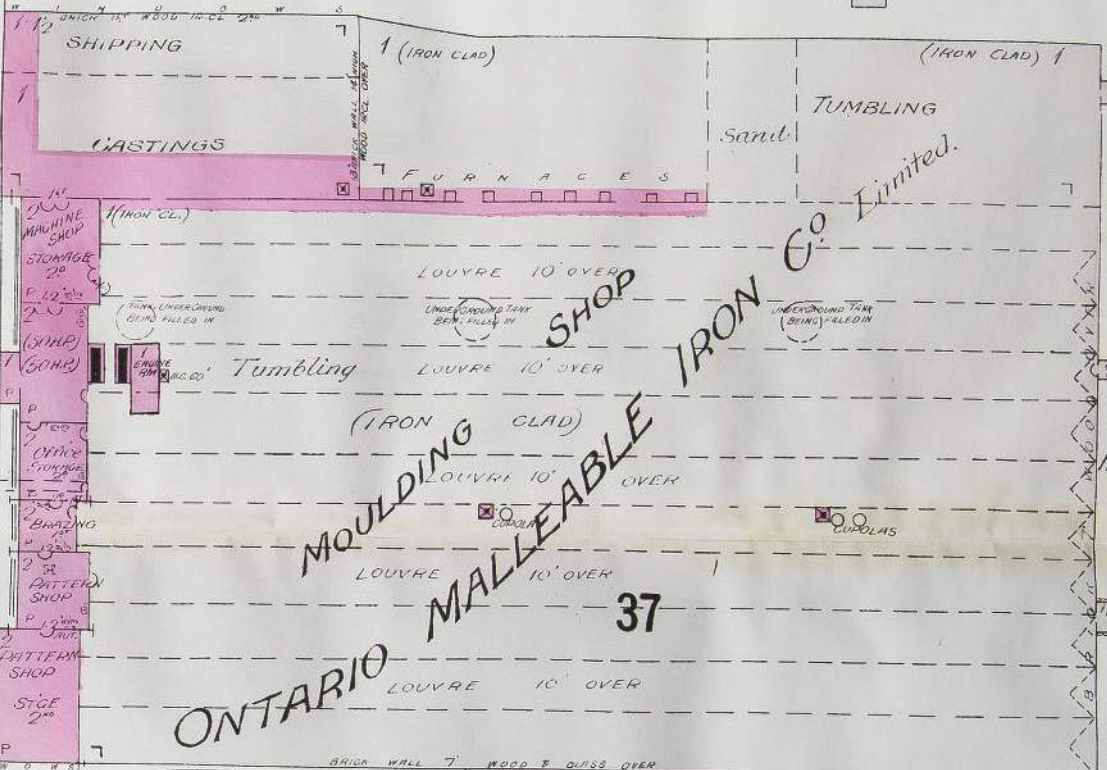
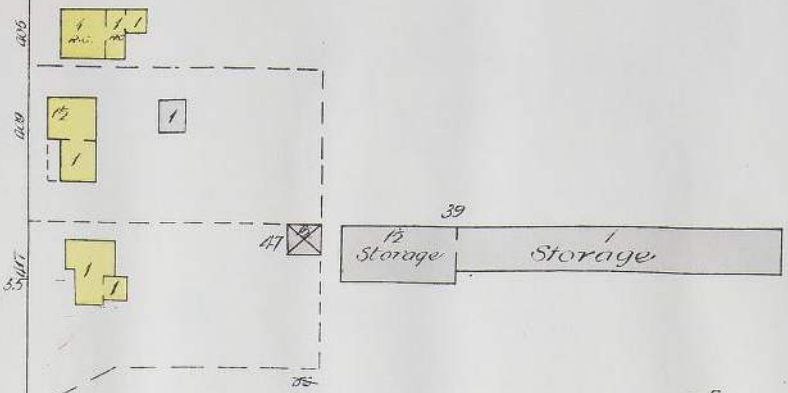
FRONT

150

ALBERT

FIRST AVE.

SEE SHEET No. 23



SCALE 50 FT. = 1 INCH

A 994, 4-1

SEE SHEET No. 20

CELINA

ROYAL

SEE SHEET No. 11  
SIMCOE

AVENUE

134

136

FISHER

CELINA

139

ALBANY

Hose Reel House opposite

SEE SHEET No. 7

OSHAWA, ONT.  
MARCH, 1911.  
EXTENSION

100

JOHN

108

LLOYD

116

120

MONK

MC GRIGOR

121

CENTRE

SEE SHEET No. 10

SCALE 50 FT. = 1 INCH

A 994-4-1

SEE SHEET No. 20

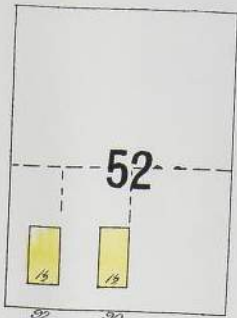
ALBERT

49

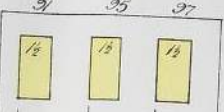


SEE SHEET No. 21

BARRIE

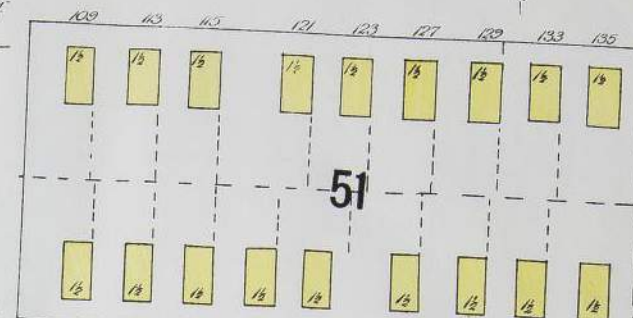


52



83

COURT



51

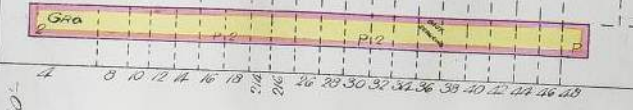


ELBOW AVE.

50



OLIVE



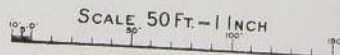
48

Oshawa Ont.  
MARCH 1911  
(EXTENSION)

PROSPECT

Steam & Electric Ry Tracks

SEE SHEET No. 17

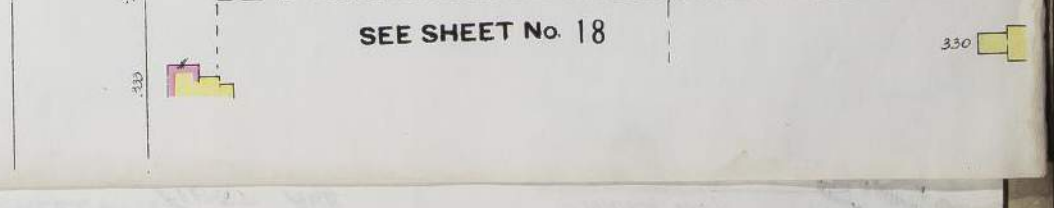
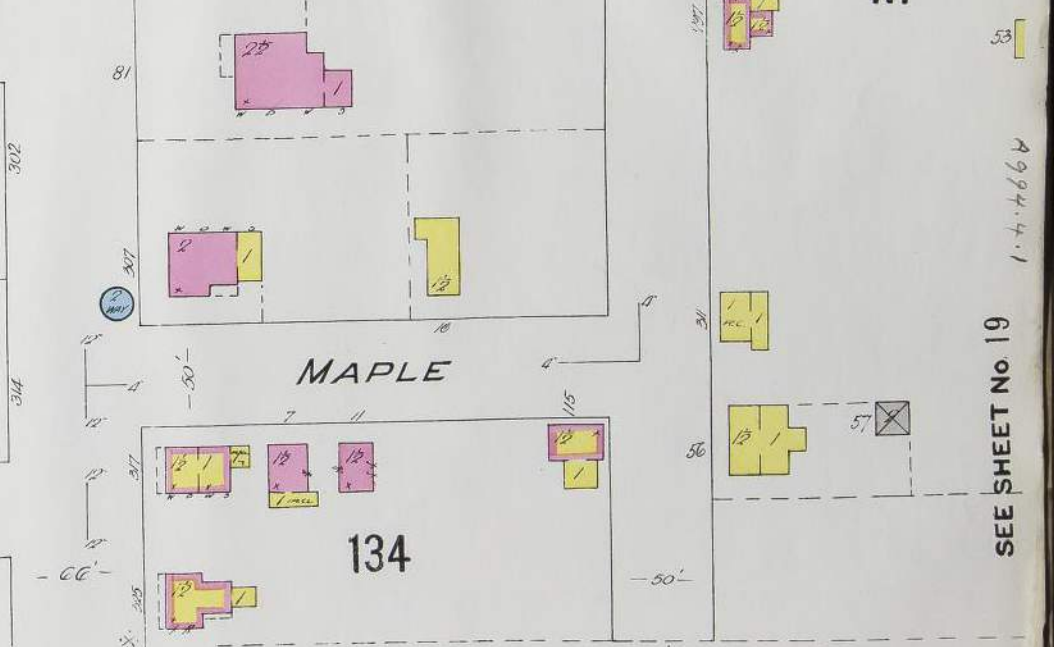
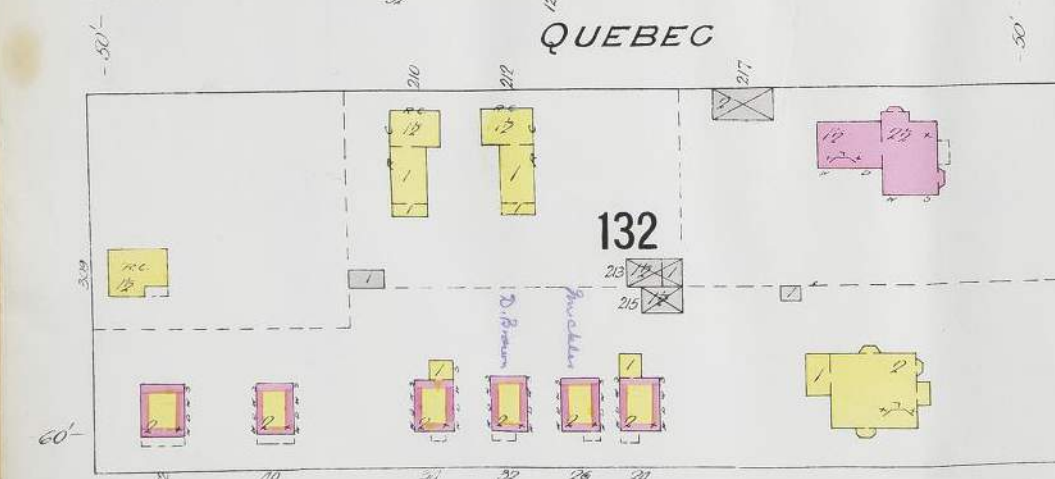
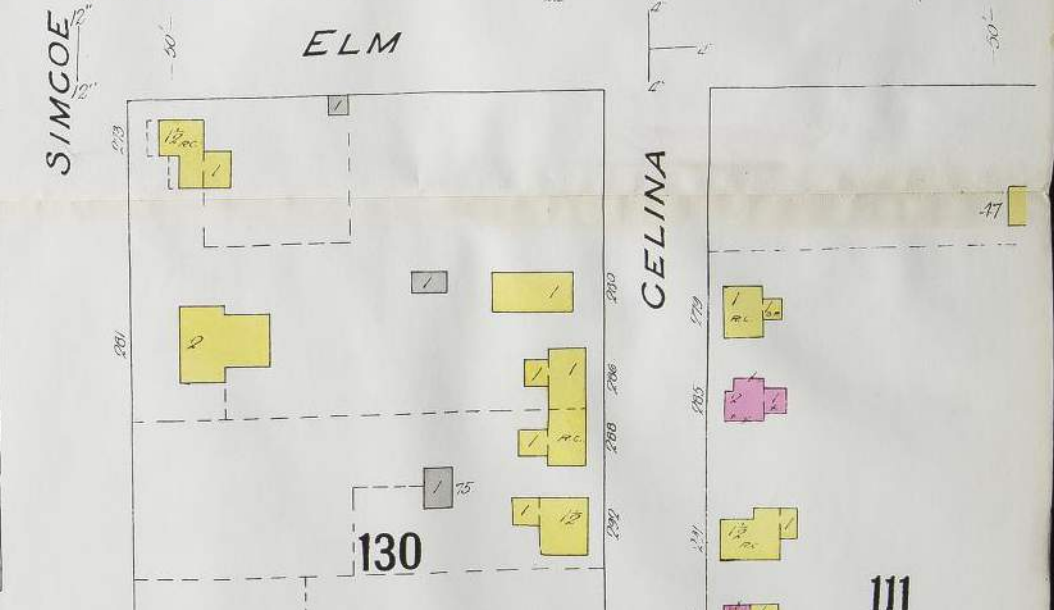
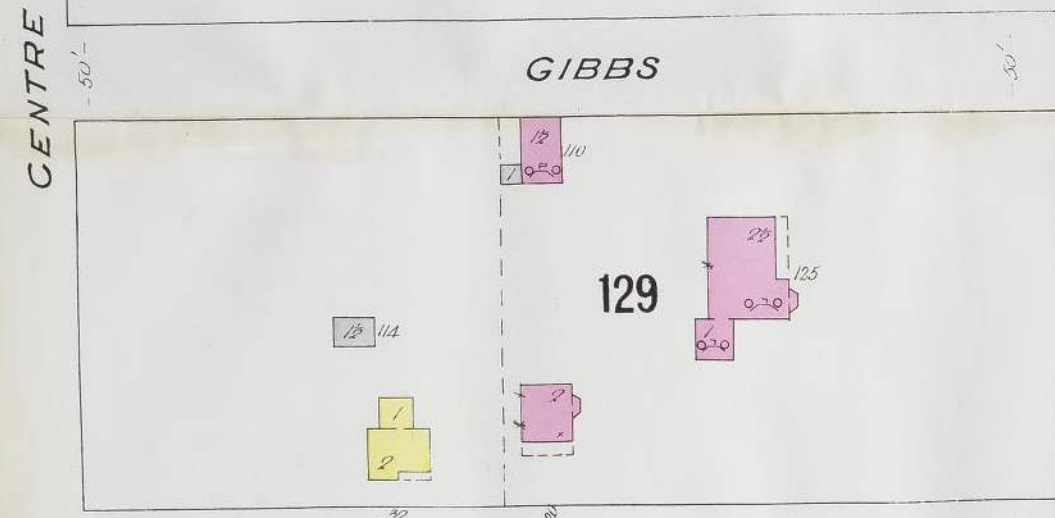
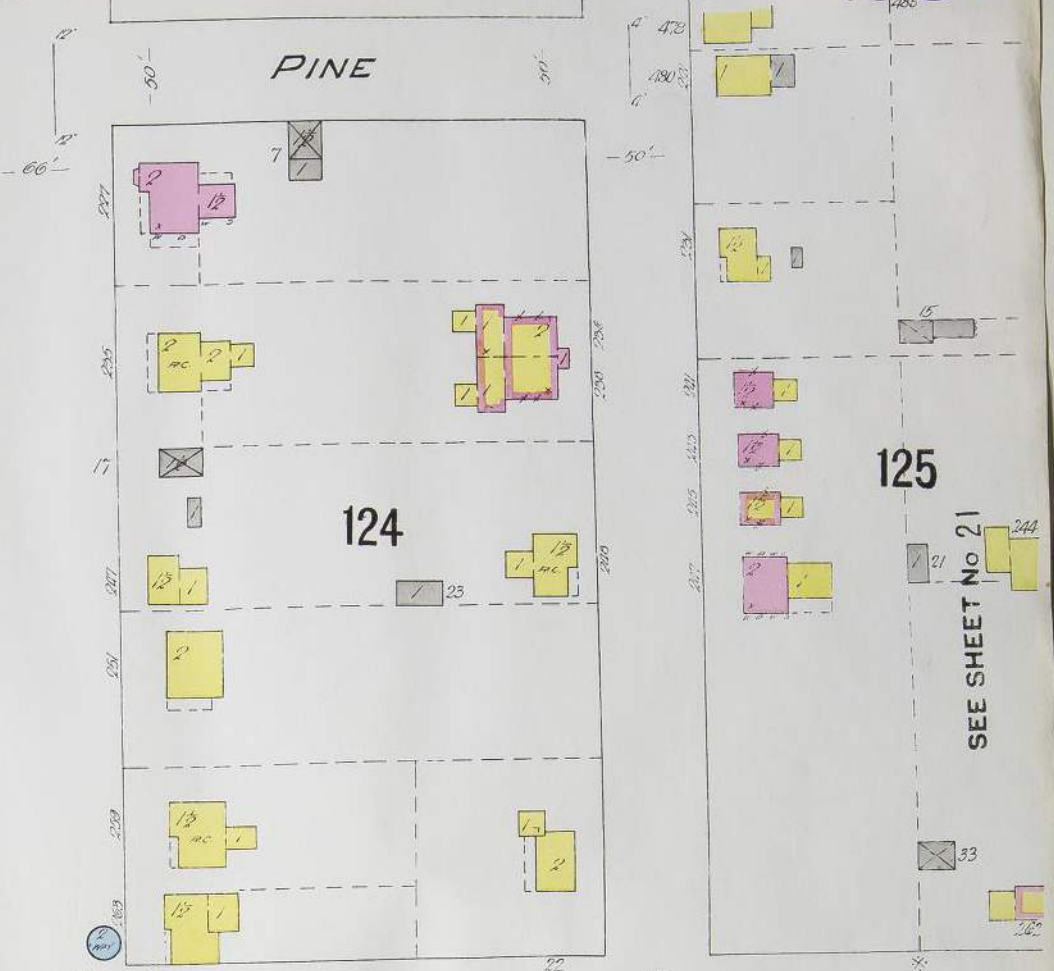
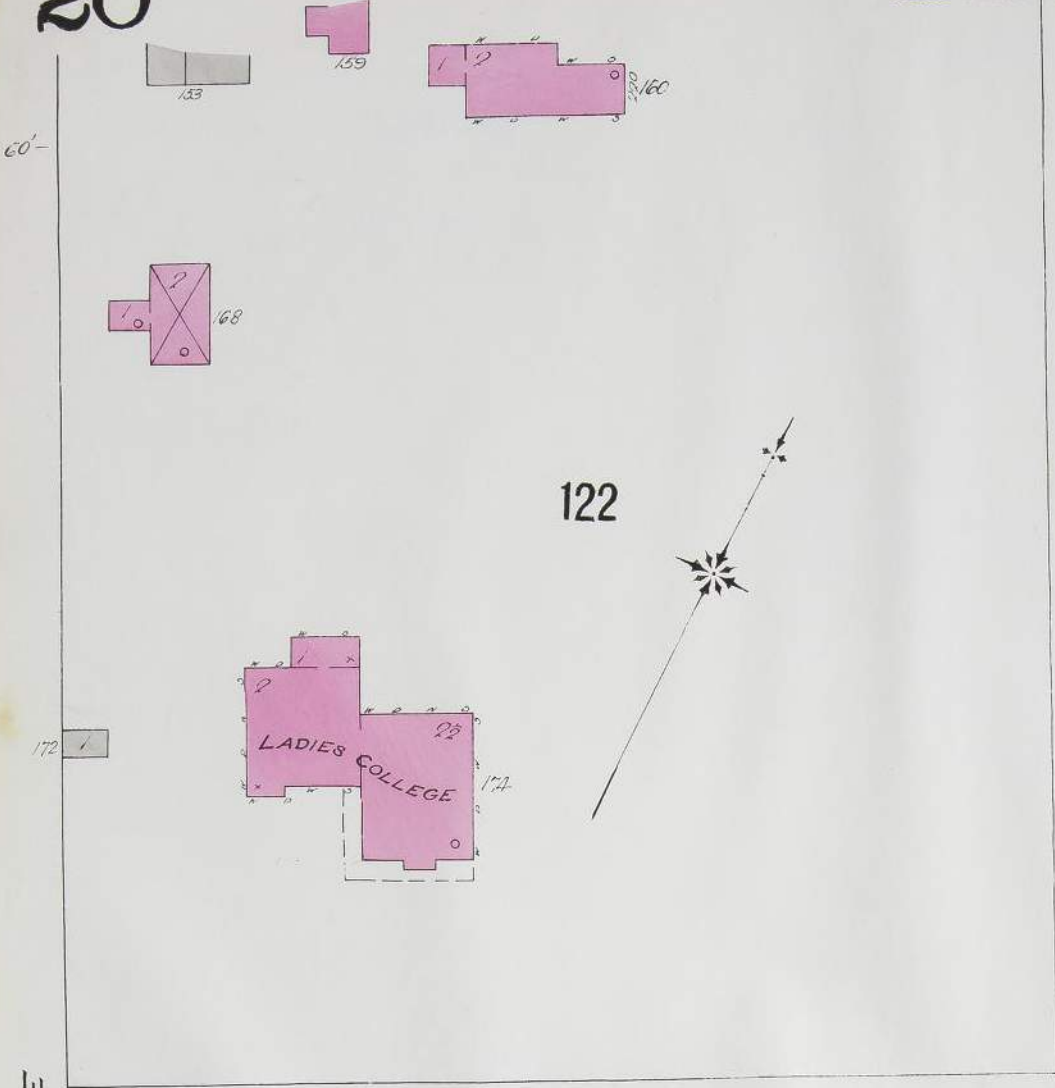


SCALE 50 FT. = 1 INCH

1911.4.1

50

OSWEGO CANT  
MAP 1911  
(EXTENSION)



SEE SHEET No 11

SCALE 50 FT. = 1 INCH

SEE SHEET No 21

SEE SHEET No 19

SEE SHEET No 18

49944-1



SEE SHEET No. 7

SEE SHEET No. 10

EMMA

HOGARTH

ALBERT

PROSPECT

COURT

COURT

STACEY AVE.

STREET

BARRIE

BARRIE

SEE SHEET No. 19

115

114

126

125

SEE SHEET No. 20

111

53

54

117

119

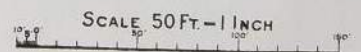
ELM

PUBLIC SCHOOL  
(INDICATES ALL SIDES)

WILKINS AVE

LUMBER SHED

LUMBER YARD



A 994.4.1

22

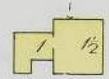
22

FIRST AVE.

OSHAWA, ONT.  
MARCH, 1911.  
EXTENSION



147



149



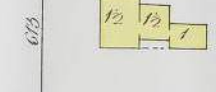
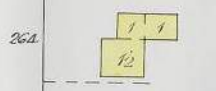
SIMCOE

35



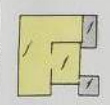
JACKSON

154

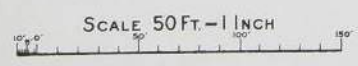
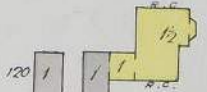


151

BRASSEY



152



SCALE 50 FT. = 1 INCH

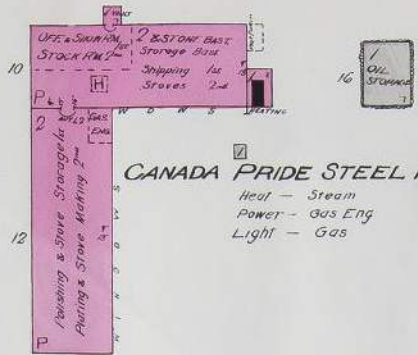
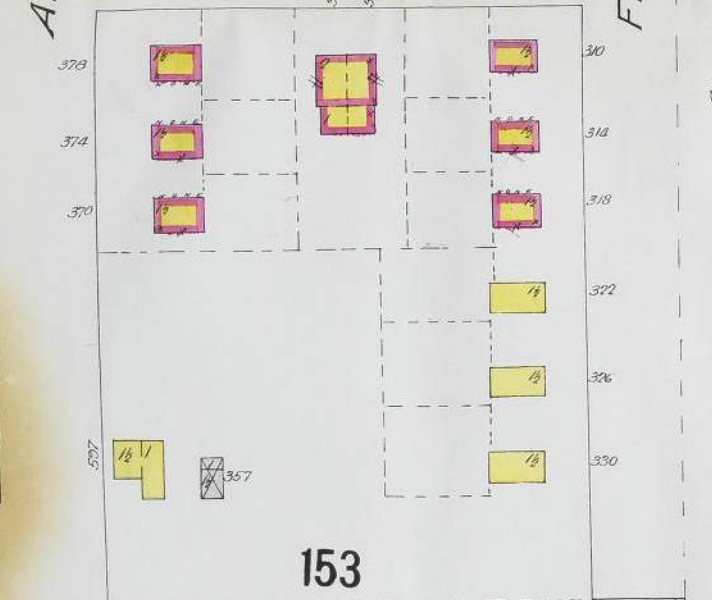
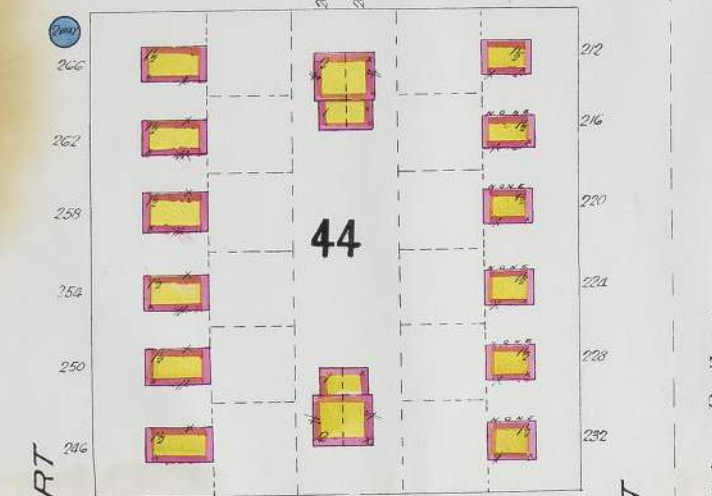
SEE SHEET No. 12

ALBERT  
SEE SHEET No. 23

THIRD AVE.

SECOND AVE.

A 994.4.1



CANADA PRIDE STEEL RANGE CO. LTD.

Heat - Steam  
Power - Gas Eng  
Light - Gas

46

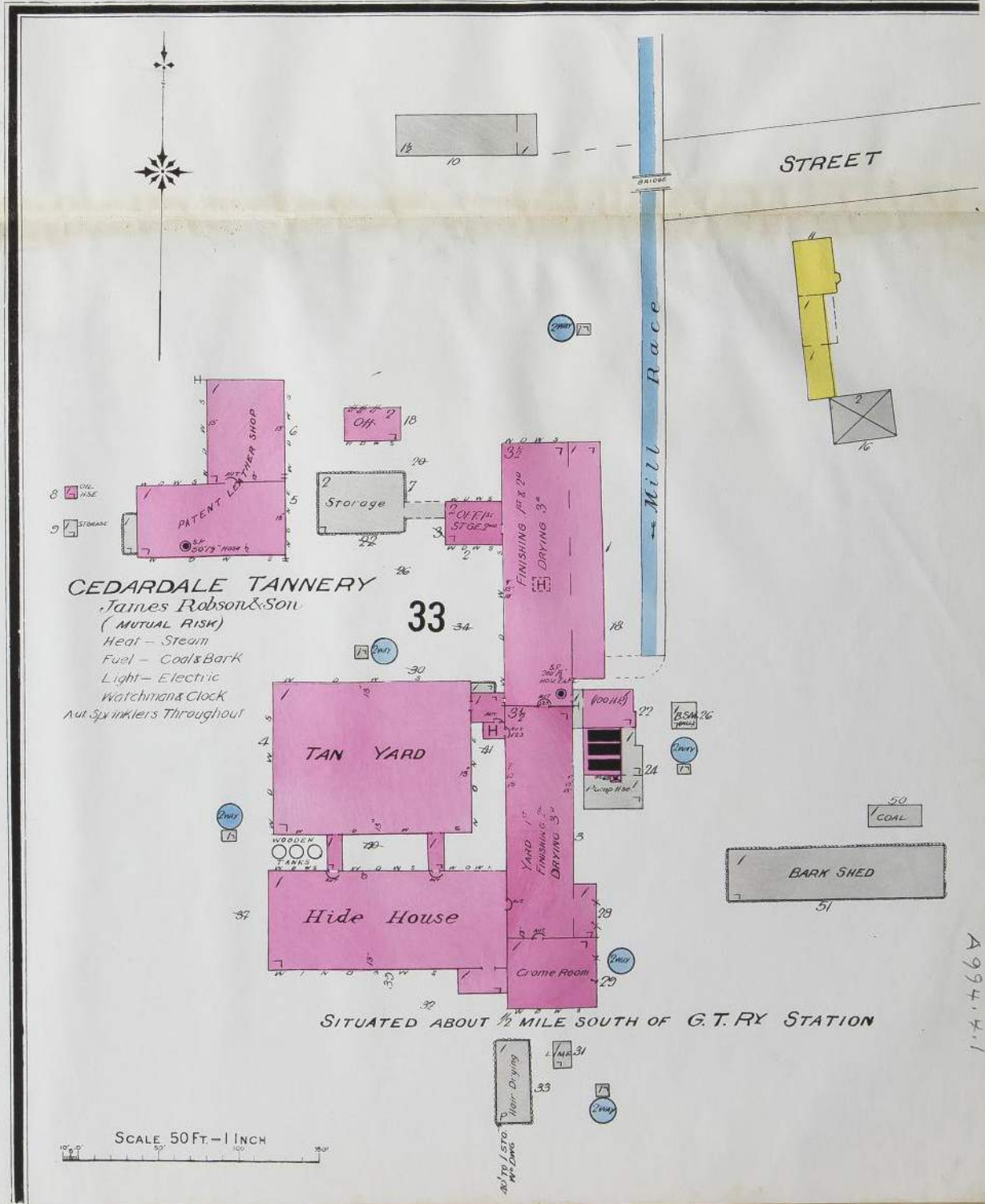


SEE SHEET No. 22

ALBERT

FRONT

Steam & Electric Railway



CEDARDALE TANNERY

James Robson & Son  
(MUTUAL RISK)  
Heat - Steam  
Fuel - Coal & Bark  
Light - Electric  
Watchman's Clock  
Aut. Sprinklers Throughout

33

SITUATED ABOUT 1/2 MILE SOUTH OF G.T. RY STATION

SCALE 50 FT. = 1 INCH

A994.4.1